



Users Groups, Patent Offices & Patent Information Quality

Alejandro Roca Campaña

Senior Director

Access to Information and Knowledge Division

Global Infrastructure Sector

Milan
September 10, 2018

Cooperation Between WIPO and Users Groups

Main Areas of Cooperation

- Patent Classification (IPC)
- Standardization (CWS)
- Patent Information Round Tables
- Specific Projects
 - Patent Register Portal
 - WIPO Intellogist Platform

Classification Activities

- Participation of users groups in IPC Workshops organized before the Committee of Experts of the IPC Union where users provided their inputs regarding issues and proposals for the improvement of the IPC, the IPC revision strategies with respect to the need for a new universal indexing / tagging scheme in the IPC covering cross cutting technologies, in general, and new emerging (NET) and environmentally sound technologies (EST), in particular.

- Participation in the different surveys released by WIPO on the IPC related IT tools through which decisions are made based on the needs of patent offices and the user community in relation to the use of different technologies such as:
 - IPCCAT-Neural technology
 - IPC Master Files and their by products
 - Layout of IPC definitions – Guide to the IPC and Guidelines for revision of the IPC
 - IPC Revision Management Solution (IPCRMS) – new export and import scheme for revision management.

Standardization Activities (CWS)

- WIPO has been providing the different users groups (PDG IMPACT Working Group and PIUG, amongst others) with up to date information on relevant activities carried out in the framework of the CWS and its task forces for the revision of current standards, adoption of new ones and ongoing work:
 - ST.27 “Recommendation for the exchange of patent legal status data”
 - ST.37 “Recommendation for an authority file of published patent documents”
 - ST.26 “Presentation of nucleotide and amino acid sequence listings using XML” and development of a common ST.26 software tool to be used by applicants and IPOs worldwide

Standardization Activities (CWS) (2)

- Important participation of users groups in Task 52 on access to publicly available patent information:
- Survey on content and functionalities of systems for providing access to publicly available patent information of IPOs, as well as future plans with respect to their publication practices; prepare recommendations for systems for providing access to publicly available patent information of IPOs.
- Focusing on interactive systems used by IPOs rather than bulk delivery of the corresponding data.
- Taking into account the knowledge gathered during the maintenance of the Patent Register Portal and the results of the work of the Legal Status Task Force.

Standardization Activities (CWS) (3)

- Applicant name standardization
- Envisaging developing a WIPO standard assisting IPOs in providing better “quality at source” in relation to applicant names:
 - Conduct a survey on the use of the identifiers for applicants by IPOs and on the problems, which might be associated with it; and
 - Prepare a proposal for future actions aimed at the standardization of applicant names in IP documents and present it for consideration by the CWS.
 - At the IP5 WG2 held in January 2018, the idea of **Global ID** was proposed.

Standardization Activities (CWS) (4)

WIPO continues close cooperation with users groups for the following tasks of the CWS:

- Global legal status data project
- Applicant name standardization
- National and regional patent registers
- Web services on IP information and documentation
- Design, electronic visual representations

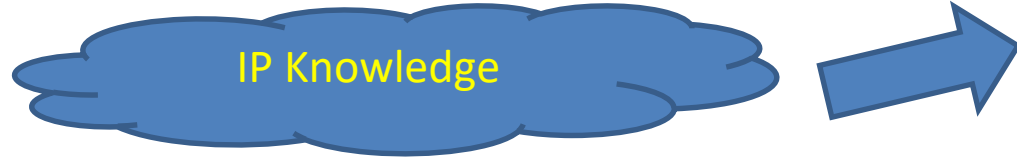
WIPO Patent Information Round Table

- Different users groups have been participating in the IP information round tables organized on a yearly basis (on site participation or via Webex) to discuss the recent developments in the field of activities being implemented by the different Divisions in the Global Infrastructure Sector:
 - Classification
 - Standards
 - WIPO CASE
 - Patentscope
 - PCT-related matters
 - Other databases - Global, Brand and Design Databases
 - WIPO Statistics
 - WIPO LEX
 - WIPO Training Programs (IP and patent information)

Participation in Users Surveys

- WIPO conducts Users Surveys for different development projects (design of new features, creation of new tools with a view to searching and finding accurate, comprehensive and quality patent data).
- Feedback from the users and maintaining a close interaction is crucial for WIPO's understanding on how to add value to information products and improve user satisfaction.

WIPO Knowledge Network



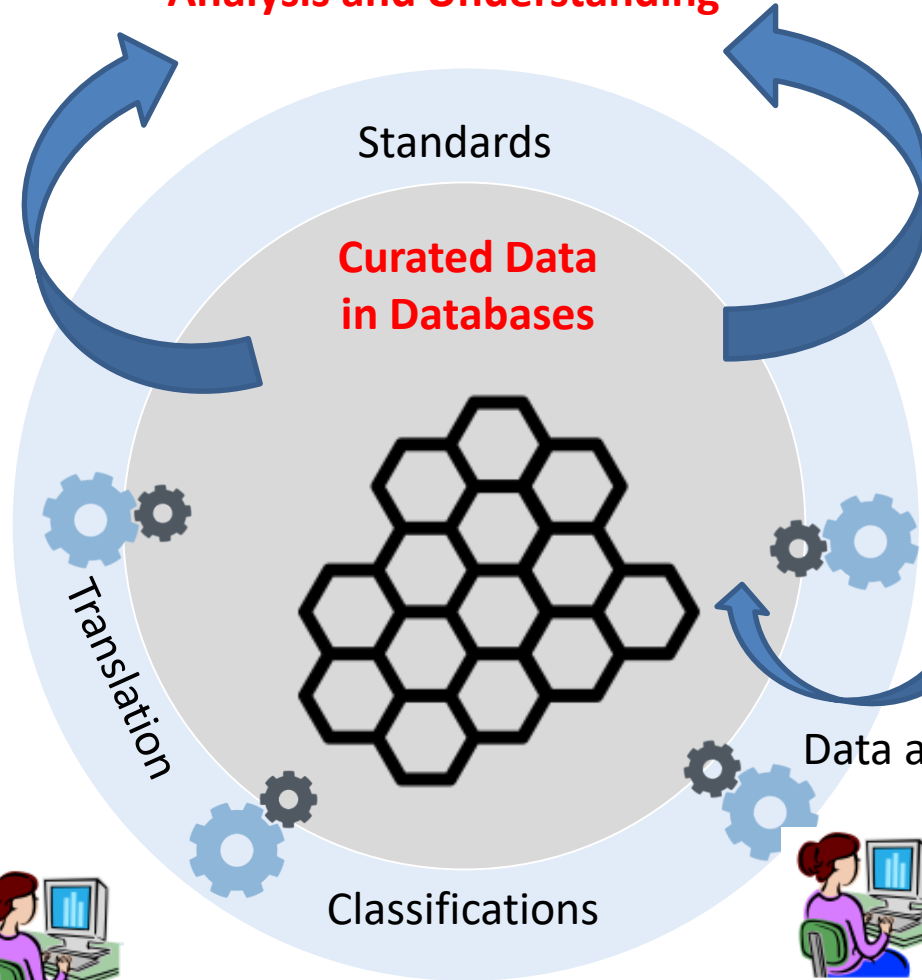
Public Good

Analysis and Understanding

Human IP expertise



Artificial Intelligence



Data and Statistics



Classifications

IP Offices & IP applicants

WIPO
WORLD
INTELLECTUAL PROPERTY
ORGANIZATION



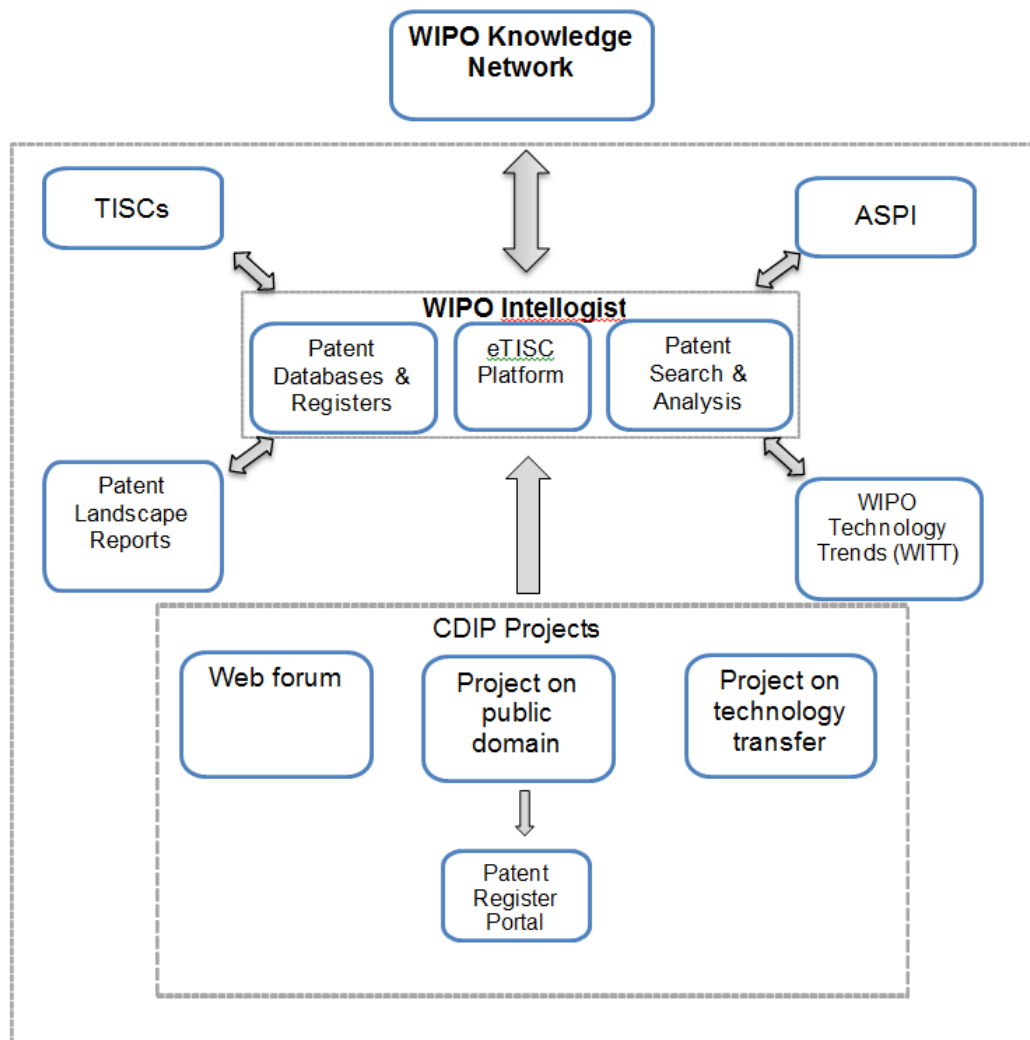
WIPO

WORLD
INTELLECTUAL PROPERTY
ORGANIZATION



WIPO Intellogist platform

WIPO Patent Register Portal and Intellogist Platform



WIPO Intellogist as an element in the WIPO Knowledge Network

WIPO Intellogist platform

Overview

- Background
- Objectives and features
 - Reports platform
 - Coverage map
 - Resource comparison
- Next steps and collaborations

Background

- Intellogist was a wiki like community of patent researchers that focused on providing in-depth information about different patent databases and search systems, how to conduct patent research and show the coverage of these databases and search systems on a map. It was free and was created and hosted by Landon IP.
- This website was discontinued in 2016.
- Intellogist attracted over 100,000 unique users and 260,000 unique page views per year.

Objectives

- In order to revive this service WIPO decided to takeover this website and the underlining data and develop a new platform. All the content, user rights and trademark has been successfully transferred to WIPO.
- This initiative from WIPO is aimed to create a new online knowledge platform on patent database services with the following features (Phase 1):
 - Reports platform
 - Coverage map
 - Resource comparison

Reports platform

- Reports would provide detailed review of patent and non-patent information systems. These would be complete information on the various patent databases and patent search systems.
- A search functionality feature would let the users search the list based on pre-set criteria or search in a free text bar.



A screenshot of a search interface. At the top is a search bar with a magnifying glass icon and the text "Search". Below the search bar are several filter options: "All" (selected with a radio button), "Free" (radio button), "ASPI" (radio button), "Licenses" (checkbox), "Graphical analysis" (checked checkbox), and "Stat analysis" (checkbox). At the bottom center of the filter area is a red "Search" button.

Coverage map

- A world map will be developed that provides information on available databases in a specific region and country plus a link to the countries patent office.
- Each country would have a pop-up associated to it to provide additional information.
- A table at the bottom of the page provides information in a structured format.

Resource comparison

- This features provides side-by-side comparisons of two patent databases or patent search systems.

Features	Clarivate	Ambercite
Item One	✓	✓
Item Two	✓	✗
Item Three	✗	✓

Next steps and collaborations

- Continuous improvement of the platform by adding more services and features for the users.
- Establish and formalize partnerships between WIPO, patent database service providers and last but not least users groups in order to add specific content to the platform.
- Maintain and continuously enhance the content of the platform by means of increased partnerships.



WIPO

WORLD
INTELLECTUAL PROPERTY
ORGANIZATION



WIPO PATENT REGISTER PORTAL

Background

- First version of the Portal developed in 2013 in the framework of a Development Agenda Project on IP and the Public Domain based on a 2011 Feasibility Study which recommended the **establishment of a global portal that would provide information and links to online patent databases of WIPO Member States**
- Objective: facilitate access to online patent registers and patent gazettes and provide information about the type of legal status information that can be searched and retrieved online, and how and where to find such information

- First version of the Patent Register Portal contained information about online patent registers and gazettes and legal status-related information from 163 jurisdictions

Patent Register Portal

The portal aims to facilitate the verification of legal status of patents and related SPCs by compiling relevant information of national registers of various jurisdictions, e.g. register. Please see the [Quick Help](#) for how to use this page, and the [User Guide](#) for detailed information about the page and the portal project.

To access a register online, please click on the respective Y in the column 'Online National Register'

The boundaries and names shown and the designations used on this map do not imply official endorsement or acceptance by WIPO.

Jurisdiction	Online National Register	English Interface	Inventor Search	PCT Search	PCT National Phase Entry	Fee Payment	Most Recent Legal Status	File Inspection	SPCs	Full Publications	Online Gazette
AB - ARABPAT	N-	Y	Y	Y	Y	N	N	N	N/A	Y-	N/A
AE - United Arab Emirates	N	N/A	N/A	N/A	N/A	N/A	N/A	N/A	N/A	N	N
AF - Afghanistan	N	N/A	N/A	N/A	N/A	N/A	N/A	N/A	N/A	N	N
AL - Albania	Y-	N	N	Y+	N	N	Y+	N	N/A	N	Y+
AM - Armenia	Y-	Y	Y	Y+	N	N	Y+	N/A	N/A	Y-	Y-

Patent Register Portal: top 10 user countries

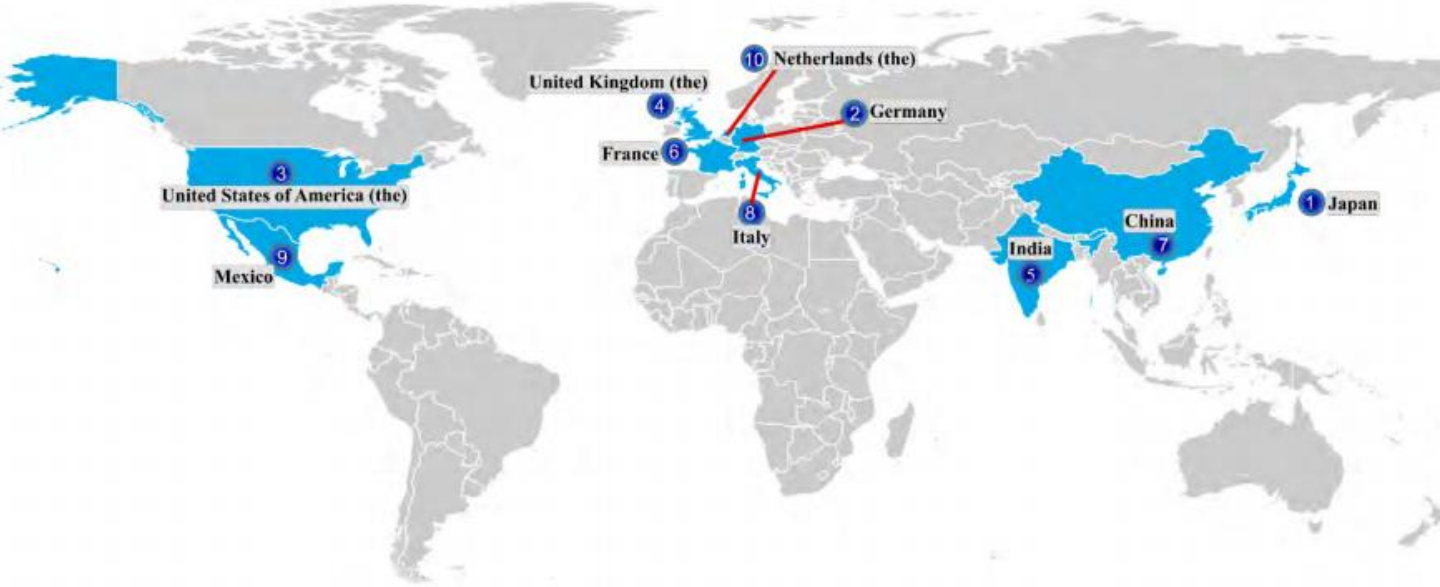


Figure 16: Top 10 countries using the Patent Register Portal

	9,799 Number of users of the Patent Register Portal in 2017
	32,635 Number of visits to the Patent Register Portal in 2017



Source: [TISCs annual report 2017](#)

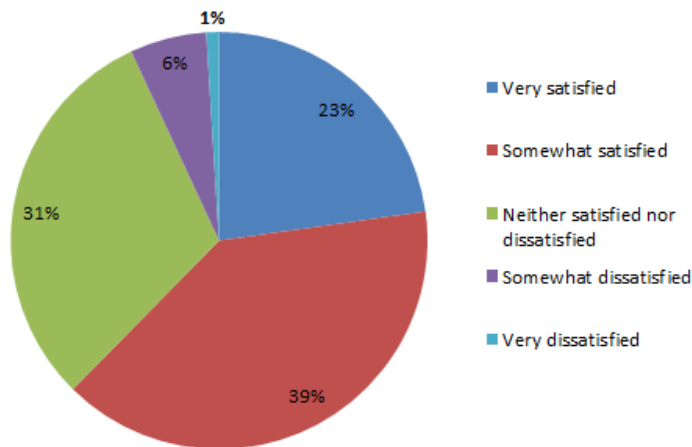
Review of the Patent Register Portal

- April 2016: Request from Member States to update the Portal in the framework of the DA Project on the Use of Information in the Public Domain for Economic Development...
 - ...with a more **user-friendly interface**, and
 - **new and updated content and links** to online patent registers and gazettes and updated information about their search features and functionalities

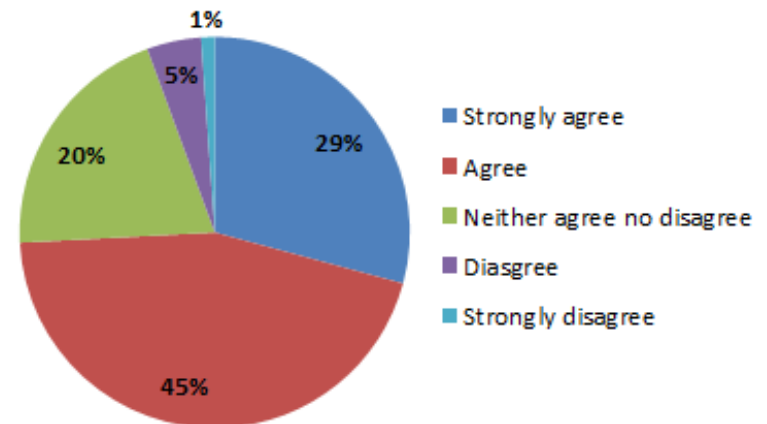
- May to September 2016: Survey sent to patent information user groups (PIUG, CEPIUG, WON...) and other targeted users to analyze the needs of users of the Portal and identify shortcomings
 - 208 responses from over 20 countries

Survey results overview

How satisfied are you with the way information is presented on the Portal?



Both the map and the table are useful



- ~40% of respondents not satisfied with the way information is presented on the Portal (high density of information, some functionalities not intuitive...)
- Over 90% of respondents agreed that both the map and the table are useful and complementary features and need to be kept to cater to different user needs

Survey results: suggestions for improvement

Reduce the density and complexity of information presented: separate the map and the table

Ensure the functionalities are more intuitive

Add a means to filter/sort the information

Add information about languages in which the patent registers can be searched

Add regional membership information

Ensure information is comprehensive and up to date – not all jurisdictions are represented on the Portal and some links are broken

Add Priority Data and Applicant Name search fields

Keep one click to access the online patent registers

Add search tips

Review of the Portal: New User Interface

- Separate map and table views, new map using UN boundary data

The screenshot displays the WIPO Patent Register Portal interface. At the top, the WIPO logo is on the left and 'Contact Us' is on the right. Below the logo, a breadcrumb trail reads 'Home > Knowledge > PATENTSCOPE > Patent Register Portal'. The main heading is 'Patent Register Portal (Beta version)'. A disclaimer box states: 'Disclaimer: This is not the final version of the portal and is subject to changes.' Below this, a paragraph explains the portal's purpose: 'The Portal is your gateway to online patent registers and gazettes and to legal-status-related information from over 200 jurisdictions and patent information collections. Use it as a first step to identify which information can be retrieved online and how to access it.' To the right of this text is a sidebar with links: 'How to use the Portal', 'Glossary', 'Resources', and 'Background'. Below the text is a navigation bar with tabs: 'Map view' (selected), 'Map view with filters', 'Table overview', and 'Detailed jurisdiction files'. Underneath is a filter bar with buttons for 'Online Register' (selected), 'Online Gazette', 'English Interface', 'PCT Application/Publication Number', 'Inventor/Applicant Name', 'Priority Data', 'Fee Payment', and a search icon. The main content area features a world map titled 'Jurisdictions that have an online patent register'. A legend on the left indicates: 'Online Register' with 'Yes' (dark blue), 'No' (light grey), and 'No data available' (medium grey). The map shows several countries in dark blue, including the United States, Canada, Mexico, Brazil, Australia, and parts of Europe and Asia. A search icon is visible above the map. The WIPO logo and full name 'WIPO WORLD INTELLECTUAL PROPERTY ORGANIZATION' are in the bottom right corner.

Review of the Portal: New Features

■ New Filtering function

Ex: show jurisdictions that have an online register searchable by applicant name

Patent Register Portal (Beta version)

Disclaimer: This is not the final version of the portal and is subject to changes.

The Portal is your gateway to online patent registers and gazettes and to legal-status-related information from over 200 jurisdictions and patent information collections. Use it as a first step to identify which information can be retrieved online and how to access it.

[How to use the Portal](#)

[Glossary](#)

[Resources](#)

[Background](#)

[Map view](#) | [Map view with filters](#) | [Table overview](#) | [Detailed jurisdiction files](#)

Combine two or more filters to narrow your search

Which services/features are available?

Online Register

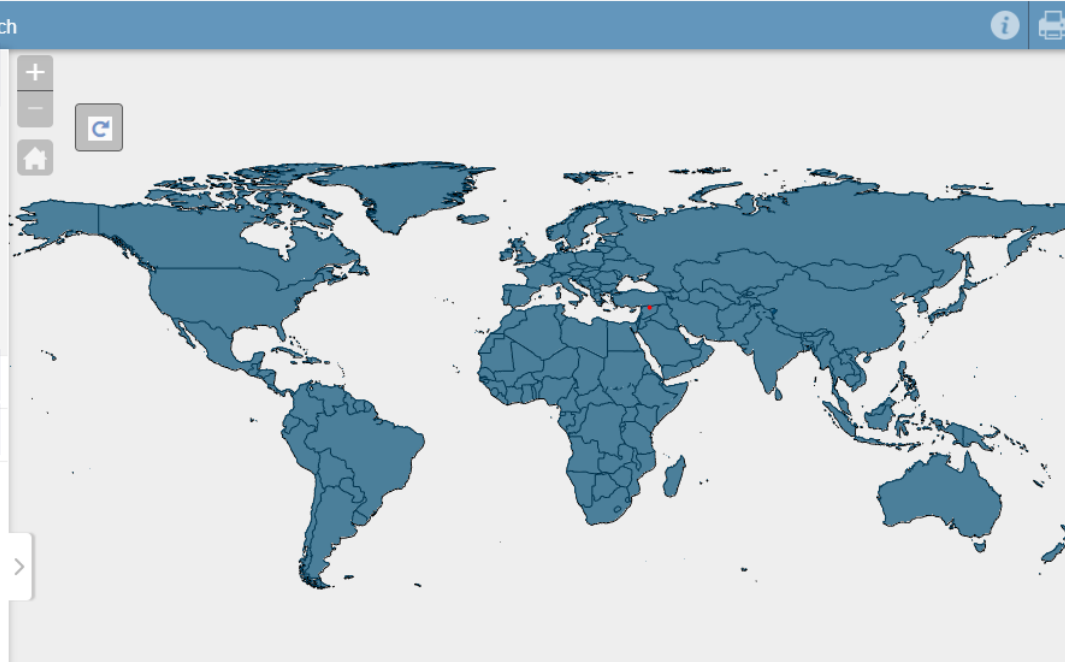
Yes

Online Gazette

English Interface

Which search fields are available online?

Which information can be retrieved online?



Review of the Portal: New Features

- Updated links/content and new data for over 200 jurisdictions and patent information collections
 - New search fields:
 - *Applicant name*
 - *Priority data*
 - *Membership of a regional organization issuing patents or a regional patent information collection*
- New accessible help files for all jurisdictions
 - Detailed information about the availability and search features of online patent registers and gazettes, including languages in which the registers can be accessed
 - Patent protection particularities
 - Search tips and useful links (WIPO Lex)

Review of the Portal: New Features

■ New accessible detailed jurisdiction files

Map view Map view with filters Table overview **Detailed jurisdiction files**

Select a jurisdiction or patent information collection to view a pdf with detailed legal-status-related information, including search tips and special patent protection provisions.

A B C D E F G H I J K L M N O P Q R S T U V Y Z

A

- Afghanistan
- Albania
- Algeria
- Andorra
- Angola
- Antigua and Barbuda
- ARABPAT
- Argentina
- ARIPO
- Armenia
- ASEAN
- Australia
- Austria
- Azerbaijan

B

- Bahamas
- Bahrain
- Bangladesh
- Barbados
- Belarus
- Belgium
- Belize
- Benin
- Bhutan

H

- Haiti
- Holy See
- Honduras
- Hungary

I

- Iceland
- India
- Indonesia
- Iran (Islamic Republic of)
- Iraq
- Ireland
- Israel
- Italy

J

- Jamaica
- Japan
- Jordan

K

- Kazakhstan
- Kenya
- Kiribati
- Kuwait

S

- Saint Kitts and Nevis
- Saint Lucia
- Saint Vincent and the Grenadines
- Samoa
- San Marino
- Sao Tome and Principe
- Saudi Arabia
- Senegal
- Serbia
- Seychelles
- Sierra Leone
- Singapore
- Slovakia
- Slovenia
- Solomon Islands
- Somalia
- South Africa
- South Sudan
- Spain
- Sri Lanka
- Sudan
- Suriname
- Sweden
- Switzerland
- Syrian Arab Republic

New feature: Detailed jurisdiction files

BRAZIL - BR



Accessible PDF file, overview of jurisdiction information in one document

Jurisdiction - General Information



Legal framework, memberships, link to WIPO Lex

Brazil has been a Contracting Party to the Paris Convention for the Protection of Industrial Property since July 7, 1884. It has also been a Contracting Party to the Patent Cooperation Treaty (PCT) since April 9, 1978 and is also a party to the Patent Law Treaty (PLT).

Brazil is also part of the regional IP information platform [LATIPAT](#) and a member of the "SISTEMA DE COOPERACIÓN SOBRE ASPECTOS DE INFORMACIÓN OPERACIONAL Y DE PROPIEDAD INDUSTRIAL" ([PROSUR](#)).

More legal information about intellectual property-related laws and regulations of Brazil can be found on [WIPO Lex](#).

Online Patent Register and Online Gazette

Brazil has an [Online Register](#) and an [Online Gazette](#).



Links to Online Register and Gazette

Additional Information

Particularities of patent protection in Brazil



Special patent protection provisions in a jurisdiction (PTEs, territories-related effects, now validating EP effect and PCT application)

Article 40 of the Brazilian patent law 9,279/96 provides a term of validity of 20 years from filing but also a minimum period of protection of 10 years from grant.

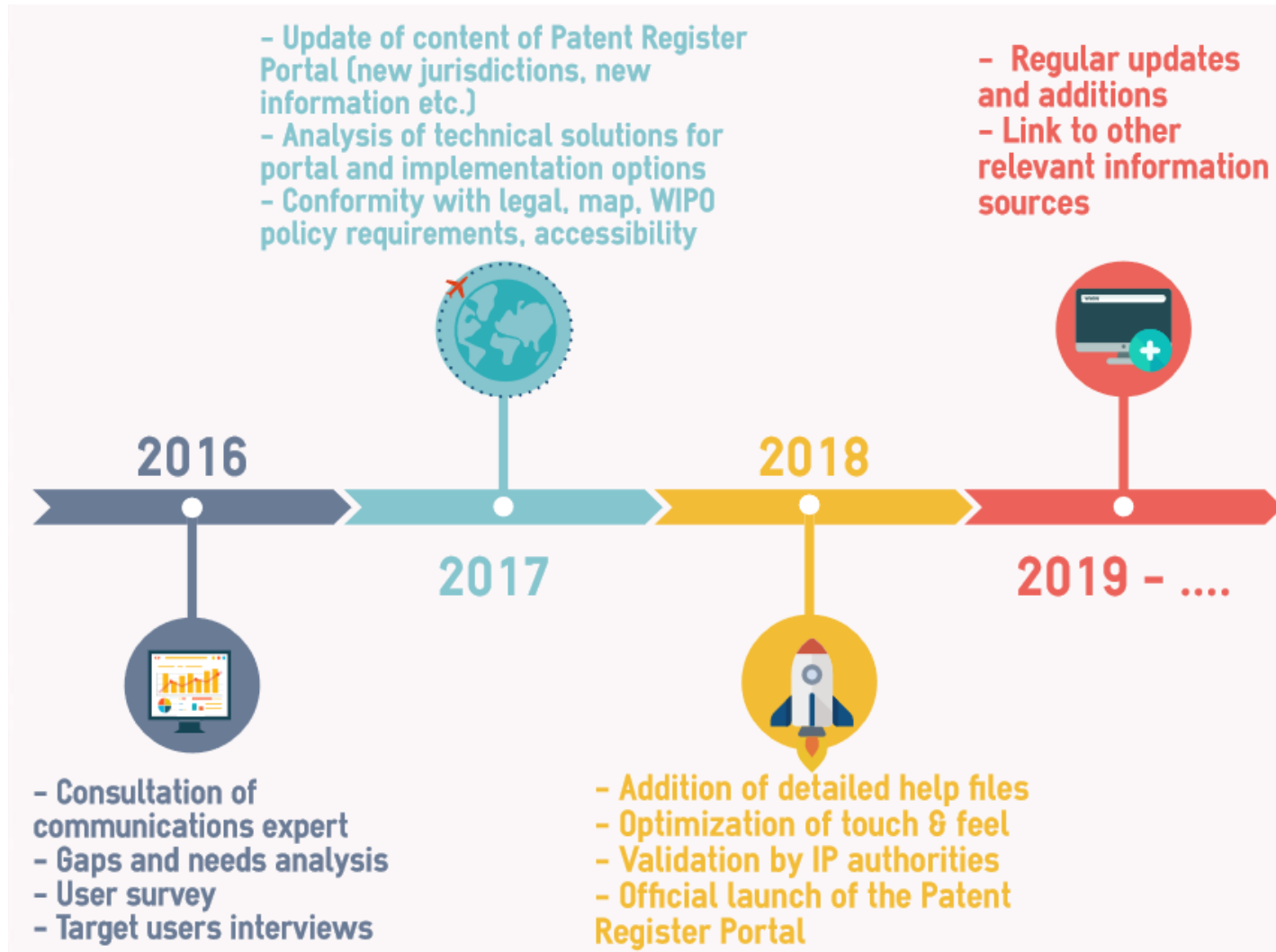
Search tips



Tips to facilitate the search (language-related, formatting, additional resources/links etc)

The search interface of the Online Register can be accessed without registration by clicking on the yellow highlighted word "Continuar...", then selecting "Patente", and finally "Pesquisa Avancada" to access more search fields

Update process of the Patent Register Portal



■ Thanks
for your attention

Questions?
tisc@wipo.int